



12150CH08

Animal cell culture is described as the *in vitro* maintenance and proliferation of animal cells that will continue to grow outside the living organism if supplied with appropriate nutrients and growth conditions. The process of growing cells under laboratory conditions is termed as Cell Culture. It is carried out *in vitro* as opposed to *in vivo* (within the living). It deals with the isolation of cells from animal tissue, surgical intervention for removal of tissues or organs from an animal and their placement into an environment (media) in order to enhance their survival and proliferation.

A homogenous population of cells is termed as a clone, when it is derived from a single parental cell. Therefore, all cells within a clonal population are genetically identical. The growth rate of animal cells is relatively slow and usually requires 18 to 24 hours to divide. This makes animal cell culture vulnerable to contamination, as a small number of bacteria would soon outgrow a larger population of animal cells.

- 8.1 *Historical Perspective*
- 8.2 *Culture Media*
- 8.3 *Physical Environment for Culturing Animal Cells*
- 8.4 *Equipment Used for Cell Culture*
- 8.5 *Types of Animal Cell Cultures and Cell Lines*
- 8.6 *Cell Viability Determination*
- 8.7 *Advantages of Animal Cell Culture*
- 8.8 *Applications of Animal Cell Culture*

Box 1

Immortal cells of Henrietta Lacks

An African-American woman named Henrietta Lacks was diagnosed with terminal cervical cancer in 1951. She was treated at John Hopkins University by a doctor named George Gey who snipped cells from her cervix without her permission. Gey discovered that Lacks' cells could not only be kept alive, but also could be grown indefinitely. For the past many years, 'Lacks' cells have been cultured and used in various experiments ranging from determining the long-term effects of radiation to testing the live polio vaccine. Her cells were commercialised and have generated millions of dollars in profit for the medical researchers who patented her tissue.

Essential requirements for optimal growth of cells are regulated temperature, proper substrate for an attachment of cells on appropriate growth medium and an incubator that maintains the correct pH and defined osmolality. Cell culture helps to study the basis of regulation of cell proliferation, differentiation, and product formation in controlled conditions and therefore, has gained a dominant position in many branches of the life science research. This technology has now emerged as a tool in the area of molecular genetics, immunological analysis, surgery, bioengineering, and pharmaceutical industry.

8.1 HISTORICAL PERSPECTIVE

The animal cell culture became a routine laboratory technique in 1950s after George Gey established the first human cell line (HeLa) from cervix cancer of the patient, Henrietta Lacks, that led to several important discoveries in medical sciences. The need for cell culture, especially at large scale, became apparent with the need for viral vaccines.

The cell culture technologies have been used in various areas, including the assessment of the efficacy and toxicity of new drugs, manufacture of vaccines and biopharmaceuticals, etc. With the development of cell culture technology, a variety of culture media have been designed. The culture medium supports cell survival and proliferation, as well as cellular functions.

Growth factors, such as nerve growth factor, epidermal growth factor, insulin-like growth factor, fibroblast

growth factor (FGF), platelet-derived growth factor, and transforming growth factor (TGF) were discovered one after another and their addition led to increased cellular proliferation. In 1976, the development of serum-free media was accelerated.

8.2 CULTURE MEDIA

The most significant and critical stage in cell culture is the selection of a suitable growth medium for their proper *in vitro* culture. Appropriate media selection will depend on the kind of cells to be cultured and on the requirement for culture, such as growth, differentiation and production of desired products like pharmaceutical compounds. A typical culture medium contains a complement of vitamins, amino acids, glucose, inorganic salts, serum (as a source of growth factors) and hormones. Additionally, medium helps to maintain the pH and the osmolality. Media can be natural consisting of natural biological substances, like plasma, serum and tissue extract or artificial/synthetic composed of a basal medium with supplements such as hormones, growth factors, serum etc.

Media supplements

As you know, the culture media contains a combination of amino acids, salts, glucose, vitamins and supplemented with other nutrients. The requirements for these components is based on the cell lines that are to be cultured and thus, there are extensive number of media formulations available.

Some additional components (hormones, growth factors, and signaling substances), which are not present in the basal media and serum, are required that help in the proliferation and maintaining normal cell metabolism.

Serum is one of the most important components of cell culture media. Serum is considered a good source for amino acids, proteins, vitamins, carbohydrates, lipids, hormones, growth factors, etc. Serum provides several binding proteins, like albumin, transferrin, which can carry other molecules into the cell. In addition, serum also supplements adhesion factors that help the cells to adhere to substratum before they begin to divide. Fetal bovine serum is commonly used to support the growth of cells in culture.

Box 2 Historical perspective of animal tissue culture

Name	Year	Breakthrough
Sydney Ringer	1882	Balanced salt solution with a composition similar to that of body fluids and kept frog hearts after dissection and removal from the body
Roux	1885	Medullary plate of chick embryo in warm saline
Jolly	1903	<i>In vitro</i> cell survival and cell division of salamander leucocytes
Ross Harrison	1907	Published experiments showing frog embryo nerve fibre growth <i>in vitro</i>
Lewis and Lewis	1911	<ul style="list-style-type: none"> • Cultured connective tissue cells for extended periods and showed heart muscle tissue contractility over 2–3 months • The first liquid media consisted of sea water, serum, embryo extracts, salts and peptides
Alexis Carrel	1912	Aseptic techniques to tissue culture. Use of trypsin, embryo extracts/animal serum
Rous and Jones	1913	Use of antibiotics: penicillin/streptomycin
	1916	Use of laminar air-flow cabinets
	1940	Trypsinization was used to produce homogenous cell types; tissue culture media
Katherine Sanford, et al.	1940s–50s	Were the first to clone mouse L-cells. Tumor cells could give rise to continuous cell lines. Used non-malignant rodent cell culture to study the effects of carcinogens/viruses.
Margaret Gey and George Gey	1948	Observed contact inhibition among fibroblasts — the beginning of quantitative cell culture experimentation
Abercrombie and Heaysma	1952	Polio virus in human E-cells; production of polio vaccine
Enders, et al.	1954	Human cell lines for the production of vaccines — human and veterinary
Hayflick and Moorhead	1955	Described the finite lifespan of normal human diploid cells.
	1961	Published the methods for maintaining differentiated cells (of tumor origin)
Harry Eagle	1962	Developed defined media
	1970	Described attachment factors and feeder layers
Buonassisi, et al.	1962	Studied the differentiation of normal myoblasts <i>in vitro</i>
Littlefield	1964	HAT selection
David Yaffe	1968	Human foetal lung fibroblasts
Kohler and Milstein	1975	First hybridoma capable of screening a monoclonal antibody

Box 3 Various types of media

Category	Definition	Type	Description	Disadvantages/ Advantages
Natural media	Consisting of natural biological substances, such as plasma, serum, and embryo extract	Coagulant or clots	Plasma separated from heparinised blood, serum and fibrinogen	The greatest disadvantage of natural media is poor reproducibility and reduced uniformity because the exact composition of these natural media are not known.
		Tissue extracts	Extracts of chicken embryos, liver, spleen, and bone marrow	
		Biological fluids	Plasma, serum, lymph, amniotic fluid, and pleural fluid	
Synthetic media or Artificial media	Composed of a basal medium and supplements, such as serum, growth factors, and hormones	Serum-containing media	Human, bovine, equine, or other serum is used as a supplement	The quality of serum varies from batch to batch and deteriorates within one year. Therefore, every batch of serum needs fresh testing.
		Serum-free media	Crude protein fractions, such as bovine serum albumin or α - or β -globulin, are used as supplements	It has the ability to make a medium selective for a particular cell type, since each cell type appears to require a different recipe.
		Xeno-free media	Human-source components, such as human serum albumin, are used as supplements but animal components are not allowed as supplements	
		Protein-free media	Undefined components, such as peptide fractions (protein hydrolysates), are used as supplements	
		Chemically defined media	Basal media Phosphate buffered saline (PBS), Dulbecco's phosphate buffered saline (DPBS), Hank's balanced salt solution (HBSS), Earle's balanced salt solution (EBSS)	Balanced salt solution (BSS) is composed of inorganic salts that maintain the physiological pH and osmotic pressure. The physiological role played by the inorganic ions is to maintain the membrane potential.

			Complex media <ul style="list-style-type: none"> • Eagle's Minimum Essential Medium (EMEM) • Dulbecco's Minimal Essential Medium, • Roswell Park Memorial Institute (RPMI-1640), • Ham's Nutrient Mixtures (Hams's F-12) 	They also work as cofactors in enzyme reaction and in cell attachment. Na^+ , K^+ , Mg^{2+} , Ca^{2+} , Cl^- , SO_4^{4-} , SO_4^{-2} , PO_4^{-3} and HCO_3^- are the inorganic molecules involved. To maintain the osmolality, concentration of NaCl is generally adjusted.
--	--	--	---------------------------------------------------------------------------------------------------------------------------------------------------------------------------------------------------------------------------------------------------------------------------	--------------------------------------------------------------------------------------------------------------------------------------------------------------------------------------------------------------------------------------------------------------------------------------------------------------------------------------------------------------

However, there are certain disadvantages of serum in media:

- Serum contains insufficient amount of cell specific growth factors and thus, cannot be used as stand alone for culture.
- It may also contain cytotoxic compounds and some growth inhibiting factors that will cause the inhibition of the cultured cell growth and proliferation.
- Serum may contain high risk of contaminants, like various virus, fungi and mycoplasma.
- The serum in the culture media may interfere with the purification and isolation of cell culture products including pharmaceutical compounds and thus, some additional approaches are applied for the isolation of cell culture products.

Even though not essential for the growth of cells, use of antibiotics such as penicillin and streptomycin, is common in culture medium to control the growth of contaminants such as bacteria and fungus.

8.3 PHYSICAL ENVIRONMENT FOR CULTURING ANIMAL CELLS

Animal cell culturing under *in vitro* conditions involves simulating suitable micro-environments, nutritional, physical, and hormonal conditions to enable optimal growth of cells. Therefore, controlling the temperature, osmolality, pH, gaseous requirements, a supporting surface and giving protection to the cells from physical, chemical and mechanical stresses are needed.



Temperature

CO₂ incubators are used to grow mammalian cells at 37°C, as this temperature simulates the body temperature of *Homo sapiens*. Moreover, most of the cells have been derived from the warm-blooded animals that will grow optimally at this temperature.

Osmolality

Osmolality of the medium has substantial effect on cell growth and function. It maintains the integrity of the cell membranes. If the outside osmotic pressure becomes lower or higher than the pressure that is maintained inside the cell, it will swell or shrink accordingly. The osmolality of the medium used is determined by the formulation of media. Both, glucose and salt are the major donors to the osmolality of the medium, even though amino acids also contribute significantly. Generally, all the commercial media are formulated so as to have a final osmolality of approximately 300 mOsmol. Osmolality can be measured by an osmometer.

Buffering systems

For optimum culture conditions, the regulation of pH is critical and is achieved by one of the following buffering systems:

(A) Natural buffering system

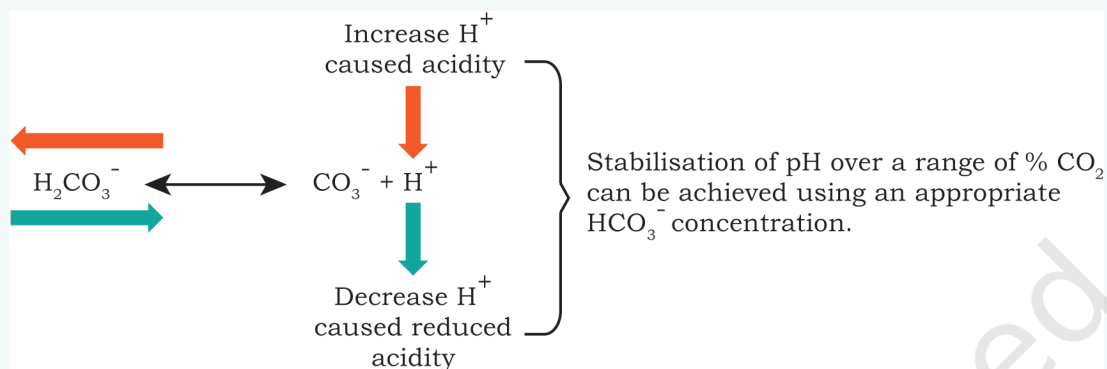
In a natural buffering system, gaseous CO₂ balances with the CO₂/HCO₃⁻ content of the culture medium. The concentrations of CO₂, HCO₃⁻, and pH are interrelated. By increasing the external/exogenous CO₂, the pH will be reduced making the medium acidic.

The culture media with a natural buffering system need to be maintained in air with 5 –10 percent CO₂, which is usually maintained by a CO₂ incubator. Natural buffering system is low cost and non-toxic. The presence of pyruvate in the medium results in the increased endogenous production of CO₂ by the cells. Thus, the use of pyruvate is advantageous because of less dependency on the exogenous supply of CO₂.



Box 4

Bicarbonate buffering follows Le Chatelier's principle. Increased acidity in the medium is established by an increase in Hydrogen (H^+) ions; free bicarbonate ions then react with the extra H^+ ions to form carbonic acid 'shifting the reaction to the left', stabilising pH. Similarly, a decrease in H^+ ions will result in a 'shift to the right'.



(B) Chemical buffering system

In the chemical buffering system, a zwitter ion, 4-(2-hydroxyethyl)-1-piperazineethanesulfonic acid (HEPES), is used that has a superior buffering capacity in the pH range 7.2–7.4, and with HEPES, a controlled gaseous atmosphere is not required. It is relatively expensive and toxic at a higher concentration for some cell types.

Phenol red

Phenol red is generally used in commercial media as a pH indicator. This is effectively used to monitor the pH change owing to the metabolic activities during cell growth. Due to the presence of phenol red, the medium changes its colour as pH changes. At acidic pH levels, phenol red turns the medium yellow, while at alkaline pH levels, the medium turns pink. Medium is bright red at optimal pH—7.4. (Fig. 8.1)

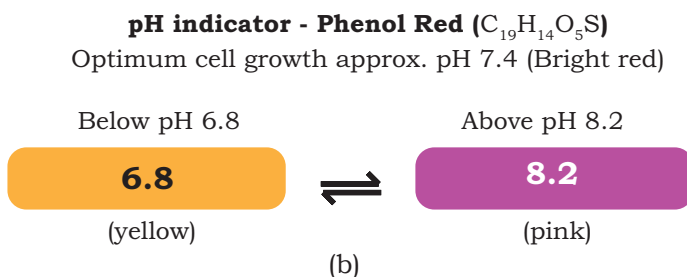
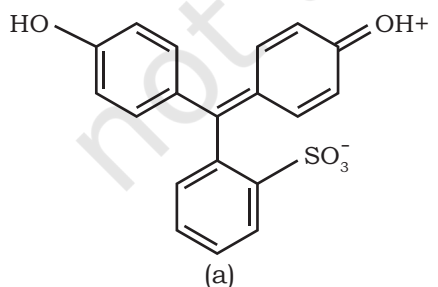


Fig. 8.1: (a) Structure of phenol red, (b) Phenol red as pH indicator

8.4 EQUIPMENT USED FOR CELL CULTURE

Cultures should be maintained and examined daily for the colour of the medium to understand their morphology and density of cells that are grown in culture flasks, Petri dishes or multi-well plates of several sizes and shapes (Fig. 8.2) at an appropriate temperature, humidity and gas mixture (typically, 37°C, 95% and 5% CO₂ for mammalian cells) in an incubator respectively. Culture conditions differ extensively for each cell type, and these variations in conditions for any particular cell type may result in the expression of altered phenotypes.



Fig. 8.2: (a) Culture flask, microplates and Petri dishes, (b) Cells scraper

An ideal animal cell culture laboratory should have equipment like laminar hood, CO₂ incubator, an inverted microscope, autoclave, centrifuge, etc. They are discussed in the following sections.

Laminar Flow Hood or biosafety cabinets

The entire work of animal tissue or cell culture should be done aseptically in the laminar hood. A laminar flow cabinet provides controlled filtered air in which the levels of particulates, microbes and contamination of all kinds are regulated and kept to a minimum by constant air filtration with industrial-grade HEPA (High Efficiency Particulate Air) filters. Laminar hoods operate by drawing air under negative pressure, into the top of the unit. This air initially passes through a pre-filter, which traps fungi, bacteria and dust particles. Air passed through this pre-filter is continuously fed by fans/ blowers through HEPA

filters into the enclosed cabinet, creating a sterile work area for the operator. The laminar flow chamber is usually enclosed on both sides and kept under constant positive pressure to prevent the inflow of contaminated room air.

In Vertical laminar flow Fig. 8.3(b), the sterilised air is passed vertically down on the work area - vertical (down flow). This is considered to be safer as the air does not blow the directly towards the person carrying out the experiments. In the horizontal flow hood, air is directed towards the person doing the experiments [Fig. 8.3(a)]. Hence, hence horizontal (crossflow) are not popular as

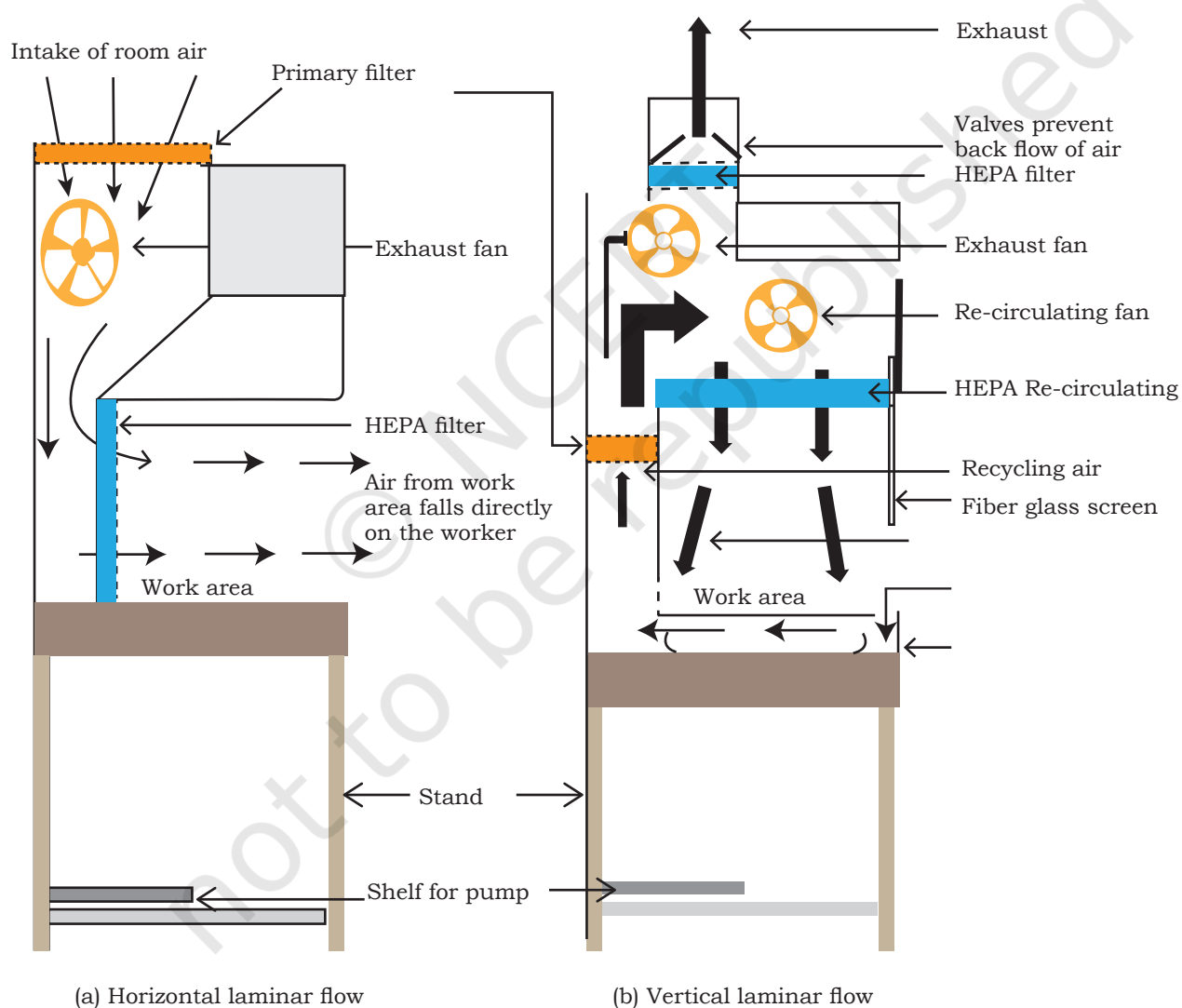


Fig.8.3: Laminar Flow Hoods (a) Horizontal (b) Vertical

they offer no protection to the operator from the potential hazards of some of the cultured cells.

CO₂ Incubators

Incubators for cell culture work depend on an external supply of CO₂ so as to maintain a fixed level of CO₂ in the incubator. To maintain sterile handling area and cleanliness, the CO₂ cylinder should be kept outside the laboratory and the gas should be piped through. The essential functions of the incubator are to maintain—the sterility of the chamber, a constant temperature, an atmosphere with a 5–10% level of CO₂, and high relative humidity (~95%) (Fig. 8.4). The medium is further buffered with sodium bicarbonate/carbonic acid and the pH must be strictly maintained.

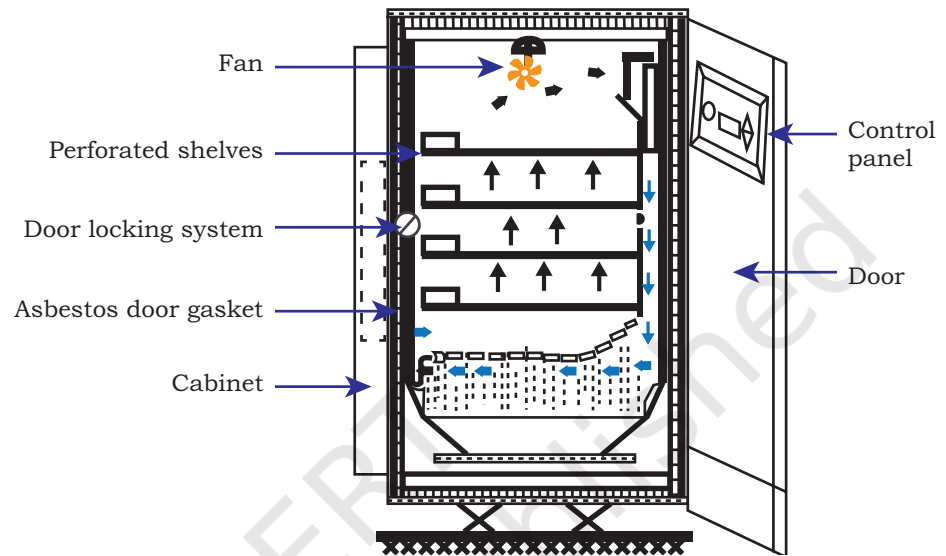


Fig. 8.4: CO₂ incubator

Inverted microscope

A cell culture laboratory essentially requires a good quality inverted microscope with phase-contrast optics and preferably a photographic facility (Fig. 8.5). The morphology of cell, granularity, degree of spreading, membrane blebbing, the proportion of multi-nucleates, vacuolation, and so on, can be regularly monitored for understanding the signs of stress in cells. Cell morphology is sensitive to the alterations in culture conditions hence, problems can be easily detected. Early indications of a microbial contamination can also be spotted with a good phase-contrast microscope. Regular checking of cultures under the microscope can help to avoid the loss of irreplaceable material by allowing a problem to be noticed at an early stage. Also, experiments done on unhealthy cells may give

variable or erroneous results. When choosing a microscope, select the long or extra-long working distance condenser so that the flasks and even roller bottles can be viewed. Normally a 20x magnification objective is sufficient; their depth of field is often too low to obtain a sharp image of all but the most flattened. A good, low-power, wide-field objective is extremely useful for scanning culture colonies.

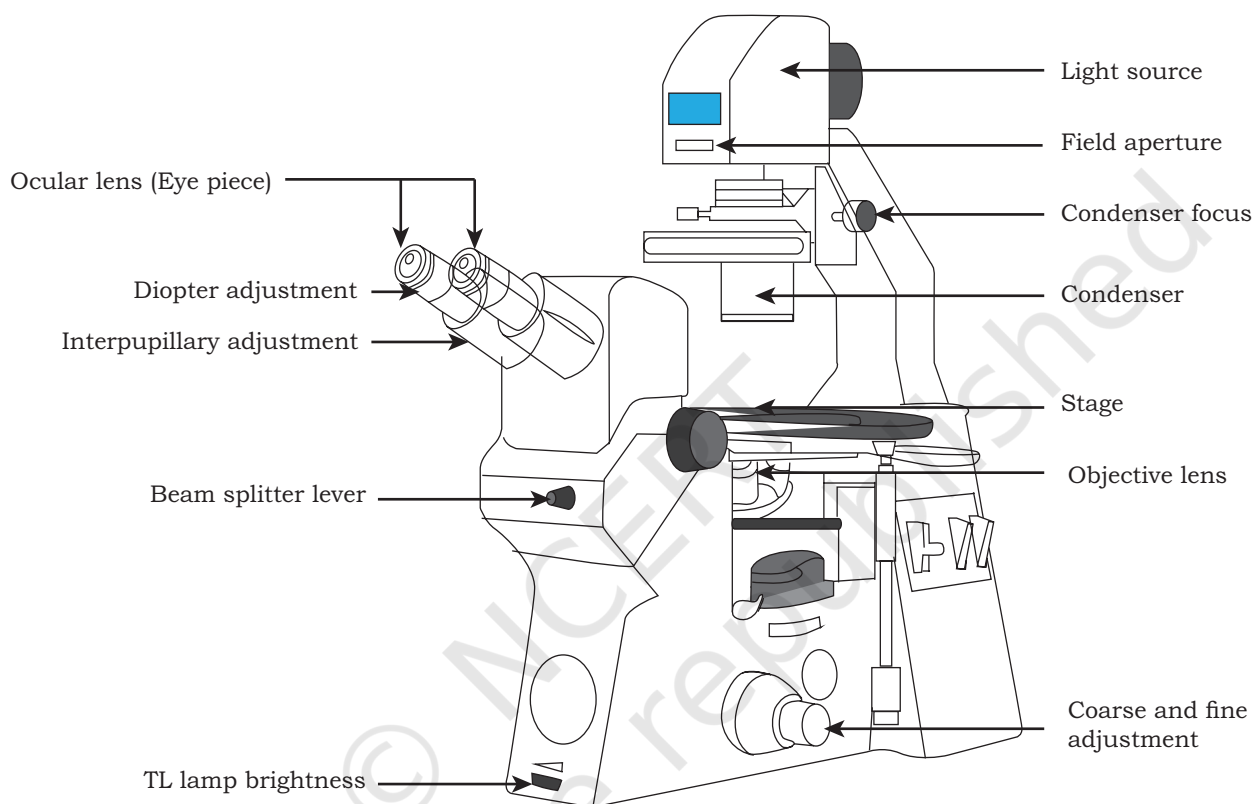


Fig: 8.5: Inverted microscope

8.5 TYPES OF ANIMAL CELL CULTURES AND CELL LINES

The animal cell cultures and cell lines are broadly classified as primary and secondary cell cultures and cell lines.

(i) Primary cell cultures

Primary cell culture is obtained directly from the host tissue. The cells dissociated from the parental or host tissues are grown in a suitable culture media in a container and thus, obtained culture is called primary cell culture.

This type of culture contains mostly heterogeneous cells and these cells are similar to their parents and is called primary cell lines. For the preparation of primary cultures and cell lines, a tissue is dissected in sterile conditions followed by mechanical or enzymatic disaggregation. The tissue can simply be chopped and the pieces attached to a dish. Now cells will grow out from the fragment and may be used directly for culture. The fragment of tissue is called explant that may be transferred to a fresh dish. Primary cultures can also be made by disaggregating tissue with the help of enzymes, such as trypsin or collagenase, etc., and the cell suspension are allowed to adhere, and spread out on the substrate. Cells may grow as adherent cultures or may remain in suspension.

(ii) Secondary cell culture

When a primary culture is sub-cultured or passaged, the resulting culture is called secondary cell culture. During sub-culturing, a portion of cells are transferred to a new vessel having fresh growth medium for continual growth of cells. Sub-culturing of primary cells leads to the generation of secondary cell lines. During the passage, the cells with highest growth capacity predominate, leading to genotypic and phenotypic uniformity in the population. As the cells are sub-cultured at regular intervals, they may become different from the original cell.

On the basis of the culture life span, the cell lines are categorised into two types:

(a) Finite cell lines

The cell lines with a limited number of cell division and having a limited life span are called finite cell lines. As the cells pass several times, they lose their ability to proliferate (i.e., **senescence**). Cell lines derived from primary cultures of normal cells are finite cell lines.

(b) Continuous cell lines

Some cells of the finite cell line undergo transformation and resume the ability to divide indefinitely, and become a continuous cell line. This type of transformation or mutation can occur spontaneously or can be chemically or virally induced. Cell cultures prepared in this way can be sub-cultured and grown indefinitely as permanent cell lines

and are immortal and tumorigenic. The continuous cell lines are less adherent and can also grow in suspension; they become fast growing, less demanding for nutrients and are able to grow up to higher cell density.

Adherent cells

These cells are anchorage dependent and proliferate as a monolayer and they require the attachment to a solid or semi-solid substrate for proliferation. These cells adhere to the culture vessel with the help of extracellular matrix, usually derived from tissues that are immobile and present in the network of connective tissue, (e.g., fibroblasts and epithelial cell types). As the bottom of the culture vessel is covered with a continuous layer of cells with one cell in thickness, known as monolayer cultures. A majority of continuous cell lines grow as monolayers. As they are single layers, such cells can be transferred directly to a coverslip to be examined under microscope.

Suspension cells

Suspension cells, also called anchorage-independent or non-adherent cells, are not attached to the surface of the culture vessels and float in the culture medium. Hematopoietic stem cells (derived from blood, spleen and bone marrow) and tumor cells are the examples of suspension cells. These cells grow faster, as they do not require frequent replacement of the culture medium and are homogeneous in nature.

Subculture

After the isolation of cells and subsequent culture, the cells can proliferate under appropriate conditions and these adhere to the available substrate to reach confluence. After a few days, the cells form a monolayer and overgrow becoming crowded, and this can be unfavourable to their growth, leading to cell death. At this point, the cells need sub-culturing or passaging, which is the process of using enzyme, e.g. trypsin, to enable the cells to detach from the old medium. It is then removed and the cells are transferred to a fresh flask after centrifugation and addition of fresh media. This is commonly termed as 'splitting' as the cells of one flask are equally split into two flasks for culturing.



A passage number refers specifically to the number of times a cell line has been sub-cultured. For the passaging of adherent cells, first all the cells are detached/dissociated from the surface of the culture vessel by enzymatic activity (trypsin, trypsin + EDTA, etc.) or mechanical means (using cell scraper, shaking, vigorous pipetting, etc.) and after that they are transferred into fresh media.

Subculture

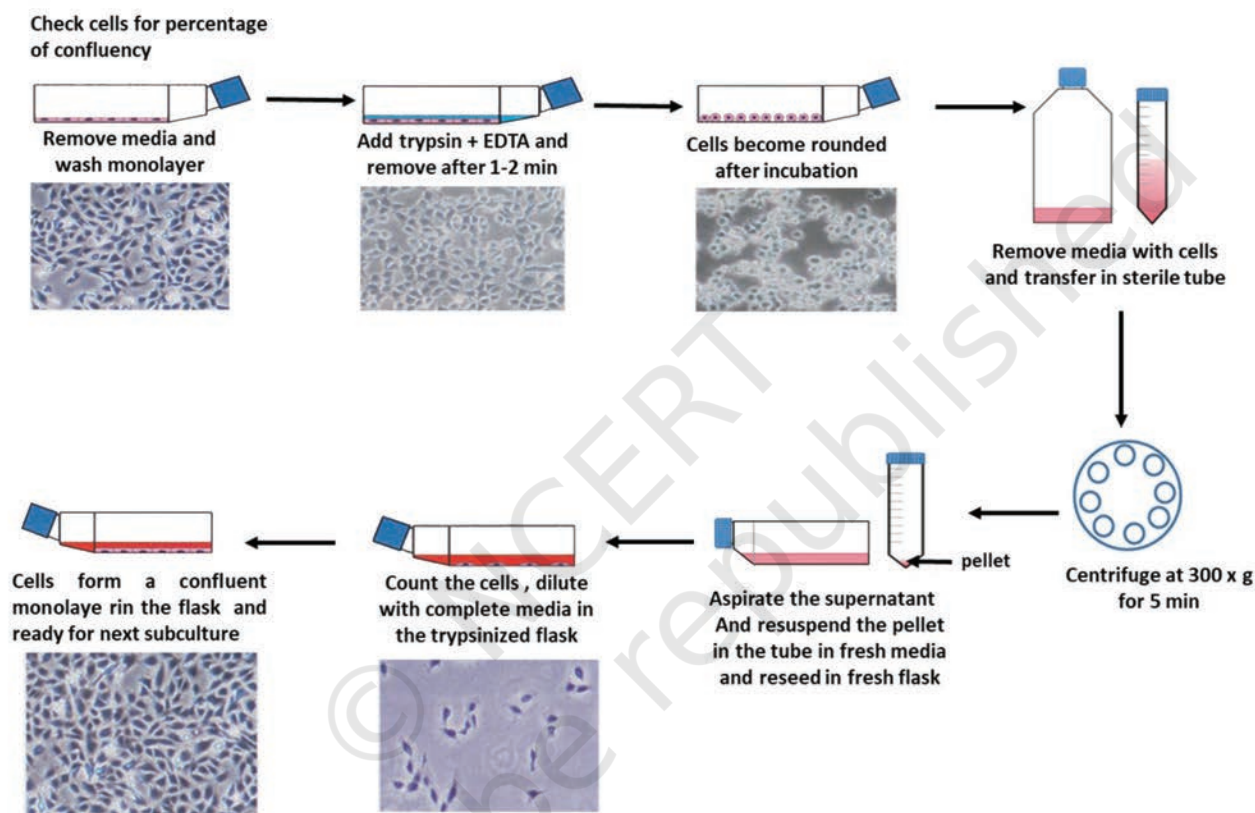


Fig: 8.6: Step involved in Subculture/ Passage

Cryopreservation

Very low temperatures (-180 to -196°C) are required to store cells. Liquid nitrogen is used for freezing cells at low temperatures as the formation of ice crystals is reduced below -130°C . Freezing can cause cell mortality due to the damage caused by the formation of ice crystals, alterations in electrolyte concentration, dehydration, and pH changes. To nullify the effects of freezing, glycerol or Dimethyl

sulfoxide (DMSO) as cryoprotective agents are added. Typically, the freezing medium contains 90% serum and 10 percent DMSO. Preferably, healthy cells growing in log phase should be used and the medium should be replaced 24h before freezing. Also, the cells should be slowly cooled from room temperature to -80°C to allow the water to move out of the cells before they freeze. Frozen cells should be thawed as rapidly as possible by placing the vial containing them into a 37°C water bath with moderate shaking. This is to minimise ice and crystal formation, which may damage cells. After thawing, the cells can be transferred directly into a tissue culture vessel containing suitable media for further growth.

8.6 CELL VIABILITY DETERMINATION

The measurement of cell viability, i.e., the determination of living, plays a vital role in cell culture. The cell viability measurements can be applied to evaluate the live status of culture cells. This is required to determine the effectiveness of a pesticide or insecticide, to evaluate the damage due to toxins as well as to evaluate the potential of a drug, etc. Usually, the cell viability assay or test should be performed at regular intervals to check whether the cells are alive or dead. Following are the two types of viability assay:

(a) Dye exclusion viability assays

In this process, a dye or stain is used that enters the cell and usually intercalates with the DNA in the nucleus. The internalisation of the dye into the cell indicates loss of cell membrane integrity that causes cell death. In other words, live cells exclude the dye, while dead cells allow the dye to enter hence, it is called dye-exclusion assay. Some examples of dye or stains are trypan blue (Fig. 8.7), propidium iodide, 7-aminoactinomycin D (7-AAD), acridine orange, etc.

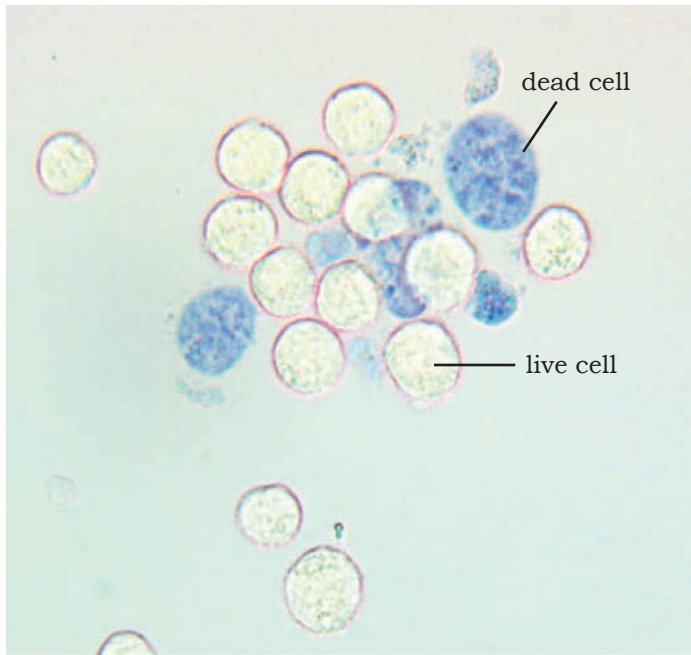


Fig.8.7: Cell viability by trypan blue exclusion assay (20X magnification)

(b) Metabolic viability assays

Metabolic viability assays rely on the ability of cells to execute a specific biochemical reaction that can be measured by various means including absorbance, fluorescence or luminescence methods (Fig. 8.8). These methods are developed to estimate the cell number based on the cellular content of enzyme or substrate and subsequent extraction of the dye one such method is MTT assay in which a yellow-coloured water-soluble salt 3-(4,5-dimethylthiazole-2-yl)-2,5-diphenyltetrazolium bromide [MTT] reacts with the mitochondrial dehydrogenase enzymes of live cells, which reduces them to purple-coloured insoluble formazan crystals, which are precipitated and dissolved in DMSO. Dehydrogenase content is consistent among the cells of a specific type and the amount of formazan reduced is proportional to the cell number.

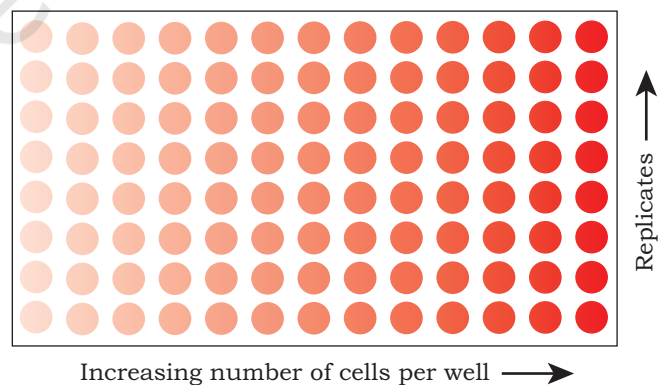


Fig. 8.8: Result of metabolic viability assays. Colour is directly proportional to the number of cells

8.7 ADVANTAGES OF ANIMAL CELL CULTURE

The advantages of animal cell culture are:

- Can be grown under controlled physico-chemical environment.
- Can proliferate into a homogenous genetic population.
- Available in adequate numbers to conduct chemical studies.
- Easy production of biopharmaceuticals.
- Ethical clearance not required.

However, there are a few limitations that are as follows:

- It is a highly sensitive technique, and even small changes can reduce the productivity.
- May not be a holistic representation of *in vivo* phenotype/genotype.

8.8 APPLICATIONS OF ANIMAL CELL CULTURE

Animal cell culture has diverse applications in various areas. Some are listed below:

- As a model system for the study of interactions between cells and diseases causing agents as well as their drugs.
- As a convenient and economic tool to study virus research
- As a useful technique for vaccine production on a large scale
- As a production house for various medically important protein pharmaceuticals. The important ones are listed in Table 8.3.

Table 8.3: Pharmaceutical proteins and their therapeutic use

Proteins	Animal cells used	Applications
Follicle Stimulating Hormone (FSH)	CHO cells	Infertility
Human Growth Hormone (HGH)	CHO cells	GH deficiency
Erythropoietin (EPO)	CHO cells	Anemia
Factor VIII	CHO cells	Hemophilia A
Factor IX	CHO cells	Hemophilia B
Interleukin 2 (L-2)	CHO cells	Cancer therapy
Tissue Plasminogen Activator (tPA)	CHO cells	Stroke
Monoclonal antibodies (mAbs)	Hybridoma cells	Cancer therapy & Autoimmune diseases
* CHO — Chinese Hamster Ovary		

Erythropoietin (EPO) is a glycoprotein hormone secreted by kidney under hypoxic (shortage of oxygen) or anoxia (lack of oxygen) conditions caused by anaemia that induces RBC production (erythropoiesis) and wound healing. EPO stimulates the bone marrow to produce more red cells and thereby increase the oxygen-carrying capacity of the blood. EPO is used for treating certain types of anaemia caused by chemotherapy in cancer patients, treatment of AIDS, and even in chronic renal failure. Recombinant human EPO (r-HuEPO) has been produced using Chinese Hamster Ovary (CHO) cell line. The use of r-HuEPO is advantageous over blood transfusion as it does not require donors or transfusion facilities, and the risk of transfusion-associated disease is minimised.

Factor VIII for Haemophilia A, is a common inherited genetic disorder in which Factor VIII required for blood clotting is not produced in the body. Like EPO, Factor VIII is also a glycoprotein and may be produced in CHO cells.

Factor IX for Hemophilia B or Christmas disease is a bleeding disorder caused due to the deficiency of factor IX. Recombinant Factor IX produced in CHO cells is used to treat haemophilia B.

Tissue Plasminogen Activator (tPA) is a serine protease that catalyses the conversion of plasminogen to plasmin which is responsible for dissolving blood clots. It is approved for use in certain patients having a heart attack or stroke. tPA was the first drug to be produced through mammalian cell culture. Production and mode of action of tPA is given in Fig. 8.9.

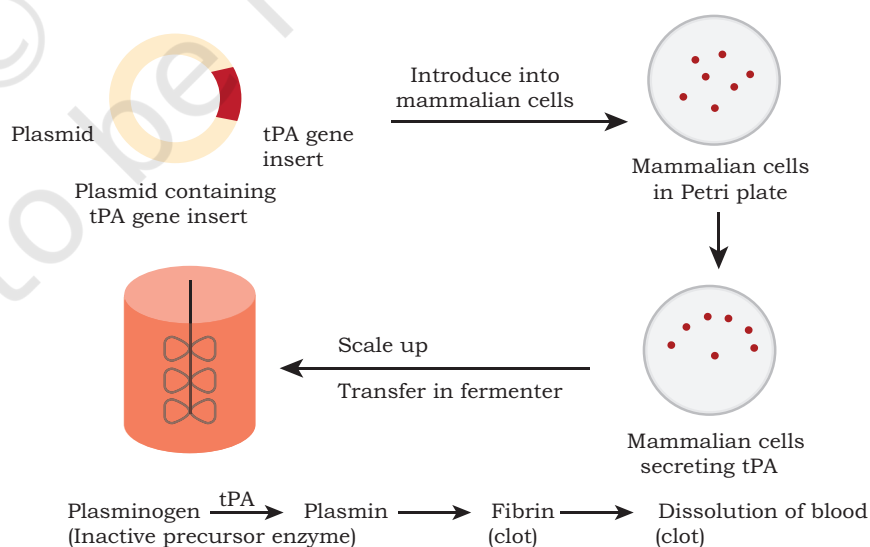


Fig. 8.9: Production and mechanism of action of tPA

Therapeutic MAB – OKT3

Muromonab-CD3 (OKT-3) is a murine monoclonal antibody directed against CD3 receptor. It is used as an immunosuppressant drug that is given intravenously to reverse acute rejection of transplanted organs, such as kidney, heart and liver. When OKT-3 is bound to CD3, the T-cell receptor (TCR) undergoes endocytosis resulting in an inert T-cell and acts by blocking the function of T cells which play a major role in acute graft rejection (Fig. 8.10). This prevents subsequent recognition. T cells are then eliminated by phagocytosis. After OKT-3 therapy is over, T cell function usually returns to normal within a week. OKT-3 was the first monoclonal antibody to be approved for the treatment of acute rejection in clinics.

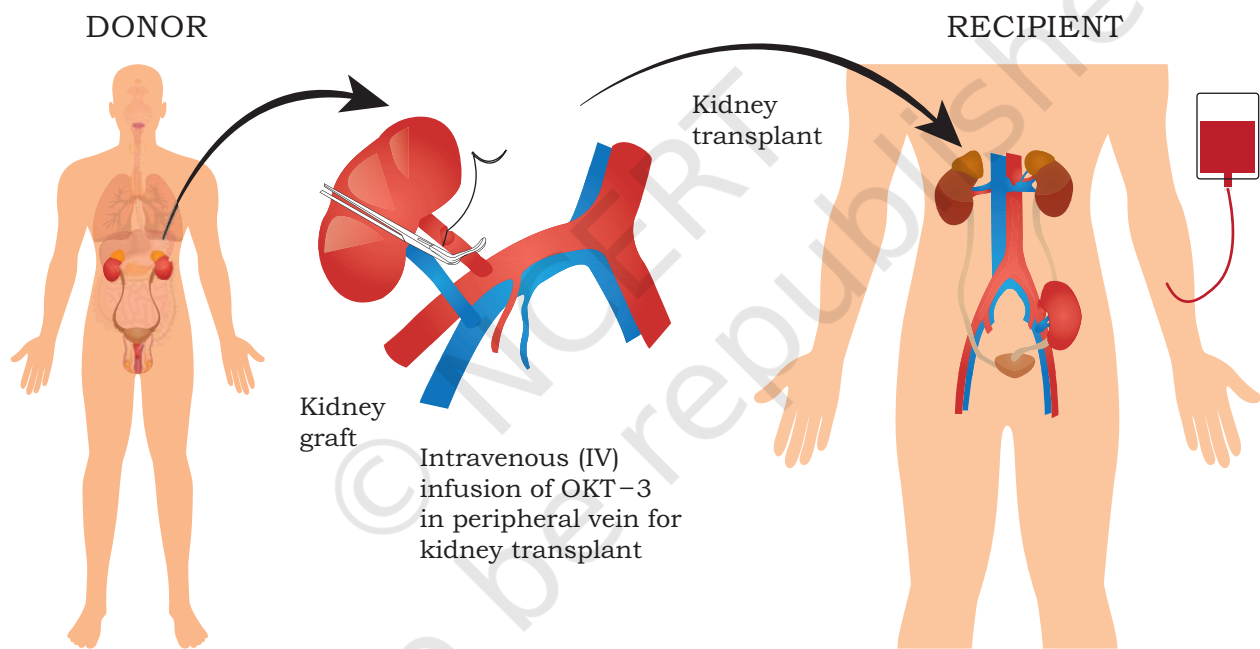


Fig. 8.10: Use of OKT-3 during kidney transplantation (KT)

Trastuzumab (brand name is Herceptin) is a monoclonal antibody approved for therapy of early-stage breast cancer that is Human Epidermal growth factor Receptor 2-positive (HER2⁺). Normal cells also express HER2 but cancer cells overexpress HER2⁺ along with dysregulation of receptor activation. These cell surface receptors receive signals that stimulate the cells to

proliferate. Trastuzumab works by attaching itself to HER2 receptors and blocking them from receiving growth signals. The result is impaired growth of breast cancer.

SUMMARY

- Animal cell culture is *in vitro* maintenance and proliferation of animal cells using an appropriate nutrient media.
- The basic requirement for optimal growth of animal cells include temperature, pH and appropriate growth medium.
- Animal cell media can be categorised into two major categories, namely natural media and artificial or synthetic media.
- Natural media consists of naturally occurring biological fluids, such as plasma, tissue extract, etc., and it is suitable for the culture of a wide range of animal cells.
- Artificial or synthetic media is made up of various nutrients (both organic and inorganic), vitamins, salts, O₂ and CO₂, serum, carbohydrates, cofactors, etc., and it can be modified according to purpose and it is divided into four categories namely, serum containing, serum free, chemically defined, and protein-free media.
- The cell culture can be classified as primary cell culture and secondary cell culture (cell line).
- Primary cells can grow either as an adherent monolayer or in a suspension.
- Secondary cell lines are derived from primary cells after sub culturing.
- On the basis of the life span of culture, the cell lines are categorised into finite and continuous cell lines.
- The cell viability measurement, i.e., the determination of living or dead cells, is very significant in cell culture and is done *via* dye exclusion or viability assays and metabolic viability assays.
- Cell culture technology has applications in various areas, such as molecular genetics, immunological analyses, gene therapy, bioengineering, pharmaceutical industry, etc.
- Animal cell culture plays an important role in research and development of drug and also helps to improve the health and quality of life of patients suffering from various diseases, such as cancer, genetic disorders, etc.

EXERCISES

1. What is animal cell culture?
2. Describe animal cell culture media and their types.
3. Write the advantages and disadvantages of serum in the culture media.
4. Describe any two chemically synthesised media.
5. What is primary cell culture? Also discuss as to how it is developed.
6. What is subculture or passaging of cells?
7. Differentiate between finite and continuous cell lines.
8. How is cell viability measurement performed?
9. Write a detailed account of application of cell culture.
10. The example of animal cell culture media is:
 - (a) DMEM
 - (b) MS media
 - (c) LB Media
 - (d) All of the above
11. Name the type of culture that is prepared by inoculating directly from the tissue of an organism to culture media.
 - (a) Primary cell culture
 - (b) Secondary cell culture
 - (c) Cell lines
 - (d) Transformed cell culture
12. Sodium bicarbonate is added to animal cell culture media to
 - (a) keep cells stuck to the plastic
 - (b) promote the uptake of CO_2 into animal cells
 - (c) maintain the correct pH when CO_2 is present
 - (d) keep iron soluble
13. Which of the following is NOT present in growth medium for animal cell culture?
 - (a) Inorganic salts
 - (b) Bicarbonate
 - (c) Carbon source
 - (d) Starch
14. Disaggregating of cells can be performed by:
 - (a) Physical disruption
 - (b) Enzymatic digestion

- (c) Treating with chelating agents
 - (d) All of the above
15. The approach in which genes are transferred into animals to obtain a large scale production of the proteins encoded by these genes in the milk, blood, etc., is called
- (a) *In situ* culture
 - (b) Molecular pharming
 - (c) Gene therapy
 - (d) Hybridoma technology
16. Which of the following is a protein-free animal cell culture media?
- (a) RPMI-1640 Media
 - (b) MS media
 - (c) LB media
 - (d) None of the above
17. MTT assay is used for
- (a) Cell viability test
 - (b) Monitoring of variation in pH of culture media
 - (c) Transformation screening
 - (d) Cell dissociation from substratum
18. Passaging of animal cells in animal cell culture is
- (a) Sub-culturing of the cells
 - (b) Isolation of cells
 - (c) Passing the cells from culture tube to Petri dishes
 - (d) Counting of cells
19. Which of the following is NOT the major function of serum?
- (a) Enhance cell attachment
 - (b) Stimulate cell growth
 - (c) Promotion of tuber and bulb formation
 - (d) Provide transport proteins
20. **Assertion:** Serum is the most important component of culture media.
- Reason:** Serum is a good source of nutrients and also helps in cell proliferation and cell-matrix attachment.
- (a) Both assertion and reason are true and the reason is the correct explanation of the assertion.
 - (b) Both assertion and reason are true but the reason is not the correct explanation of the assertion.

- (c) Assertion is true but reason is false.
(d) Both assertion and reason are false.
21. **Assertion:** Cell lines derived from the primary culture of normal cells are finite cell line.
Reason: Some cells of the finite cell line undergoes transformation and retain the ability to divide indefinitely.
- (a) Both assertion and reason are true and the reason is the correct explanation of the assertion.
(b) Both assertion and reason are true but the reason is not the correct explanation of the assertion.
(c) Assertion is true but reason is false.
(d) Both assertion and reason are false.