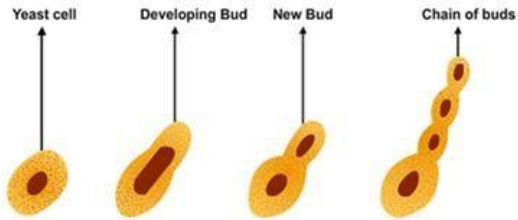


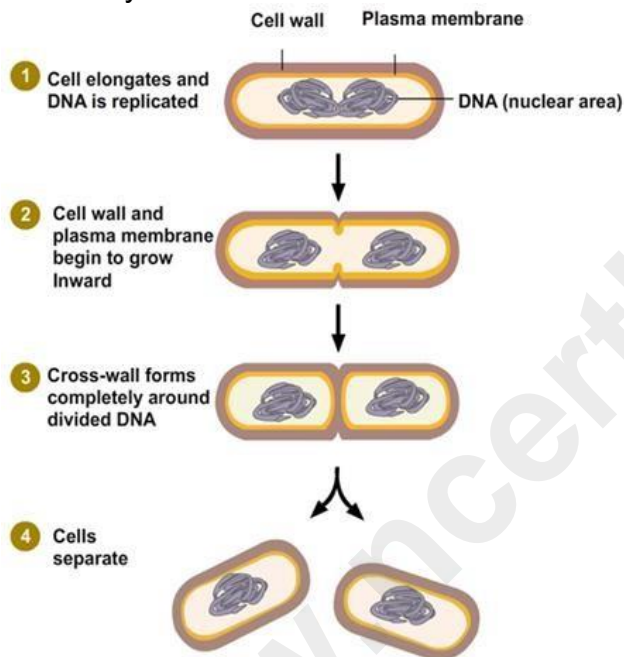
ICSE Class 8 Biology REPRODUCTION IN PLANTS

Asexual reproduction

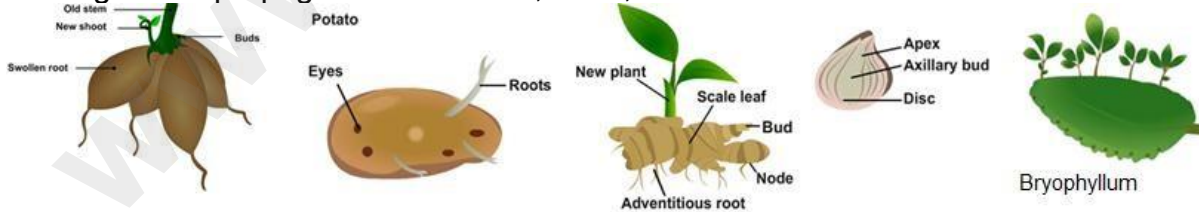
- Budding in yeast



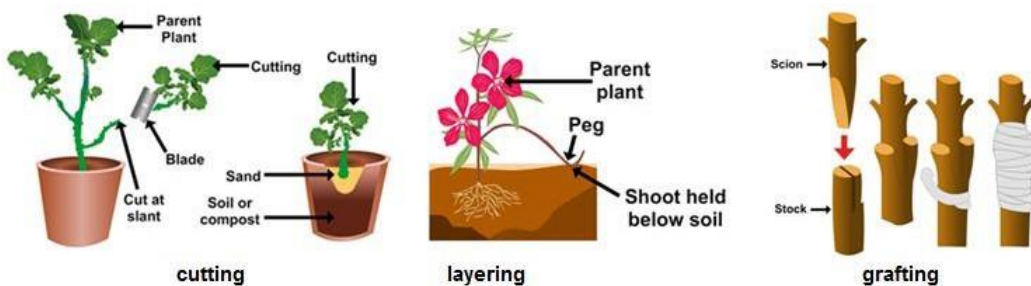
- Binary fission in bacteria



- Vegetative propagation from stem, roots, leaf

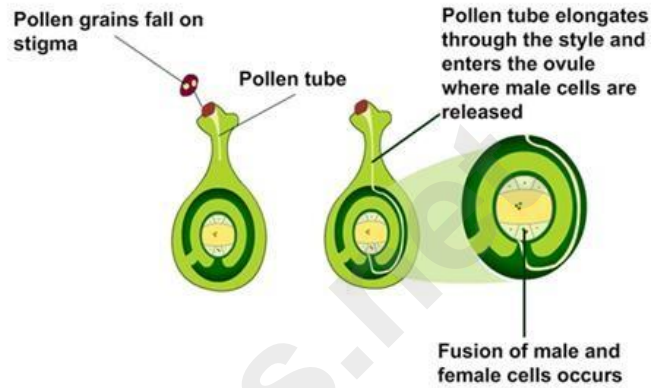
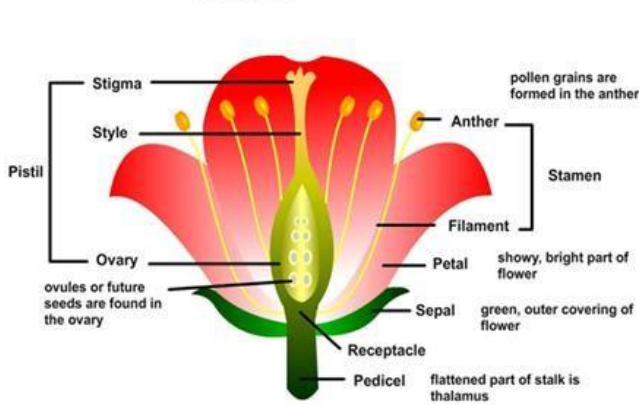


- Artificial propagation- methods developed by man



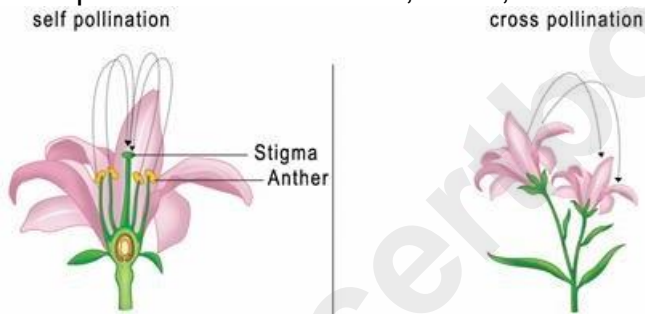
Sexual reproduction in plants
Flower is the reproductive part of the plant

FLOWER



POLLINATION

- Transfer of pollen from stamen to stigma to ensure fertilization
- Agents of pollination include wind, water, insects



It occurs within the same flower. Pollen from the anther is transferred to stigma of the same flower.

It occurs between two flowers of the same plant. Pollen from the anther of one flower is transferred to stigma of another flower in the same plant.

www.ncertbooks.in